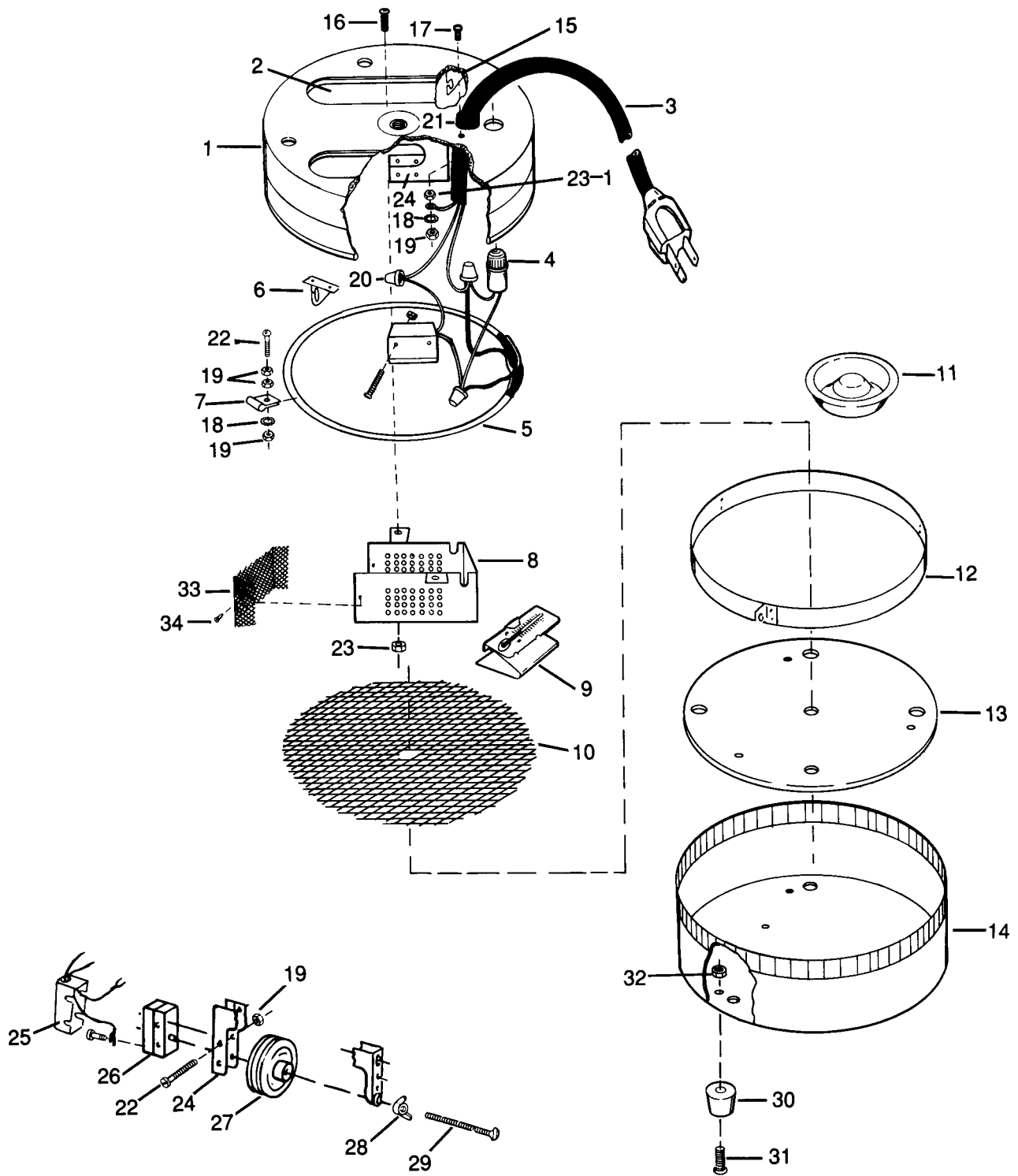


845 50-EGG INCUBATOR

Ref. No.	Part No.	Description	Quantity
1	16845	Top Pan	1
2	11417	Window	2
3	45072	18-3 SJT x 5 1/2' Cord Set	1
4-1	45150	#1050A4 120V Pilot Light	1
4-2	45149	#1051A4 220V Pilot Light	1
5-1	45110	Heating Element, 115V, 60 Hz, 150 Watts	1
5-2	45091	Heating Element, 220V, 50 Hz, 150 Watts	1
6	11410	Element Clip	3
7	16858	Grounding Clip, (70539)	1
8	16848	Raceway Assembly	1
9	66C	739-1 Incubator Thermometer	1
10	11413	Egg Tray Floor	1
11	11408	Moisture Pan	1
12	11567	Floor Support Assembly	1
13	11415	Bottom Insulation	1
14	11401	Bottom Pan Assembly	1
15	16844	Top Insulation	1
16	OF214	10-24 x 1/2 Slotted Round Head Machine Screw, Zinc	2
17	OF367	6-32 x 1/2 Slotted Round Head Machine Screw, Zinc	1
18	OF209	#6 External Tooth Lock Washer, SS	2
19	OF52	6-32 Hex Machine Screw Nut, Zinc	6
20	45047	Nylon Connector, #35653	3
21	45017	Strain Relief Bushing, #SR-6P-34	1
22	OF368	6-32 x 1 1/4 Slotted Round Head Machine Screw, Zinc	3
23	OF53	10-24 Hex Machine Screw Nut, Zinc	2
23-1	OF53	10-24 Hex Machine Screw Nut, Zinc-Used as a Spacer	1
24	10689	Switch Bracket Assembly	1
25	45117	5PA2 Terminal Enclosure	1
26	45189	WA-2R-A21 Microswitch	1
		(Note: Order Ref. Nos. 25 and 26 as 17477, Microswitch Assembly)	
27	2W*	Incubator Wafer	1
		(Note: In some Sears catalogs, 2W is referred to as Part No. 11422)	
28	OF382*	10-32 Cold Forged Wing Nut, Zinc	1
29	OF383*	10-32 x 2 Type "P" Thumb Screw, Zinc	1
		(Note: Starting in 1993, Ref. Nos. 25, 26, 27, 28 and 29 were replaced with Model No. EC10 or EC10220, our electronic control. See Page 3 of this Repair Parts Catalog.)	
30	70253*	516R Recessed Bumper	3
31	OF371*	8-32 x 1 Slotted Round Head Machine Screw, Zinc	3
32	OF294*	8-32 Hex Machine Screw Nut, Zinc	3
33	16843*	Raceway End, Removeable	1
34	OF372*	8-32 x 3/8 Phillips Pan Head Sheet Metal Screw, Zinc	2
	11403	Hardware Bag - Includes items with *	1
	56087	Moisture Guide Label	1
	70795	Decal, 3 5/8 x 1 3/8, 846 120V	1
	70804	Decal, 1 1/2 x 1/2, 846, 150W-240V	1
	56085	Decal, Yellow, Warning 2 x 3 1/2	1
	70796	Cooler/Warmer Heat Decal	1
	ISB845846	Instruction Sheet	1

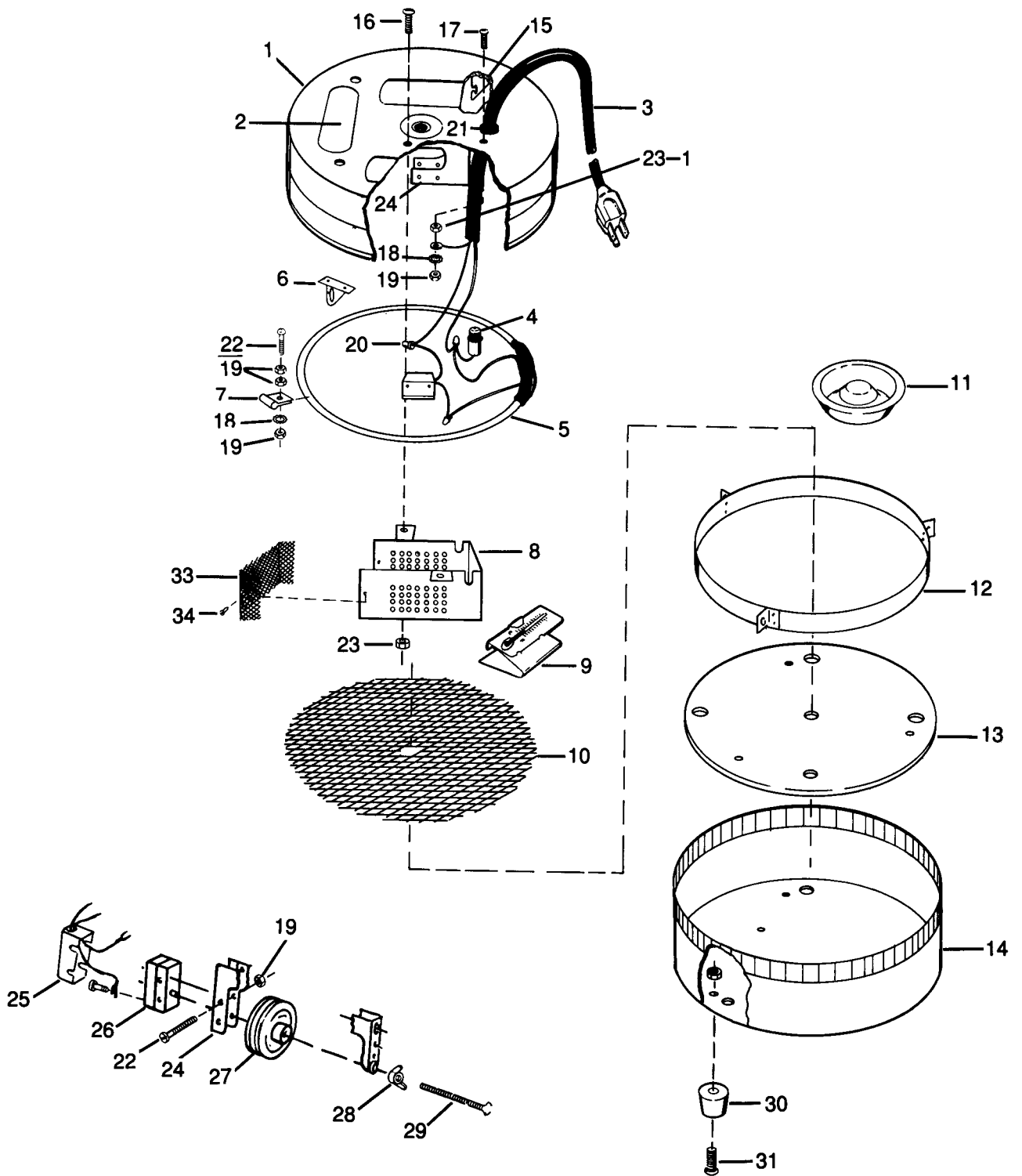


INCUBATOR SPECIFICATIONS

Model No.	Description	Egg Capacity (approximate)					Overall Size Inches (cm)	Shipping Weight	
		Chicken	Quail	Pheasant	Turkey	Goose		Lbs.	(kg)
845	50-Egg Incubator, 120V	50	80	65	No	No	15½ Dia. x 6½ H (39.4 Dia. x 16.5 H)	12	1(5.5)
845220	220-volt, 50 Hz Incubator						15½ Dia. x 6½ H (39.4 Dia. x 16.5 H)	12	(5.5)

846 100-EGG INCUBATOR

Ref. No.	Part No.	Description	Quantity
1	16854	Top Pan	1
2	11417	Window	3
3	45072	18-3 SJT x 5 1/2' Cord Set	1
4-1	45150	#1050A4 120V Pilot Light	1
4-2	45149	#1051A4 220V Pilot Light	1
5-1	45111	Heating Element, 115V, 60 Hz, 150 Watts	1
5-2	45097	Heating Element, 220V, 50 Hz, 150 Watts	1
6	11410	Element Clip	4
7	16858	Grounding Clip, (70539)	1
8	16856	Raceway Assembly	1
9	66C	739-1 Incubator Thermometer	1
10	10682	Egg Tray Floor	1
11	10683	Moisture Pan	1
12	10684	Floor Support Assembly	1
13	10677	Bottom Insulation	1
14	10671	Bottom Pan Assembly	1
15	16853	Top Insulation	1
16	OF214	10-24 x 1/2 Slotted Round Head Machine Screw, Zinc	2
17	OF367	6-32 x 1/2 Slotted Round Head Machine Screw, Zinc	1
18	OF209	#6 External Tooth Lockwasher, SS	2
19	OF52	6-32 Hex Machine Screw Nut, Zinc	6
20	45047	Nylon Connector, #35653	3
21	45017	Strain Relief Bushing, #SR-6P-34	1
22	OF368	6-32 x 1/4 Slotted Round Head Machine Screw, Zinc	3
23	OF53	10-24 Hex Machine Screw Nut, Zinc	2
23-1	OF53	10-24 Nut-Used as a Spacer	1
24	10689	Switch Bracket Assembly	1
25	45117	5PA2 Terminal Enclosure	1
26	45189	WA-2R-A21 Microswitch	1
		(Note: Order Ref. Nos. 25 and 26 as 17477, Microswitch Assembly)	
27	2W*	Incubator Wafer (Note: In some Sears catalogs, 2W is referred to as Part No. 11422)	1
28	OF382*	10-32 Cold Forged Wing Nut, Zinc	1
29	OF383*	10-32 x 2 Type "P" Thumb Screw, Zinc	1
		(Note: Starting in 1993, Ref. Nos. 25, 26, 27, 28 and 29 were replaced with Model No. EC10 or EC10220, our electronic control. See Page 3. of this Repair Parts Catalog.)	
30	70253*	516R Recessed Bumper	4
31	OF371*	8-32 x 1 Slotted Round Head Machine Screw, Zinc	4
32	OF294*	8-32 Hex Machine Screw Nut, Zinc	4
33	16843*	Raceway End, Removeable	1
34	OF372*	8-32 x 3/8 Phillips Pan Head Sheet Metal Screw, Zinc	2
	16859	Hardware Bag - Includes items with *	1
	56087	Moisture Guide Label	1
	70795	Decal, 3 ⁵ / ₈ x 1 ³ / ₈ , 846, 120V	1
	70804	Decal, 1 ¹ / ₂ x 1 ¹ / ₂ , 846, 150W - 240V	1
	56085	Decal, Yellow Warning, 2 x 3 ¹ / ₂	1
	70796	Cooler/Warmer Heat Decal	1
	ISB845846	Instruction Sheet	1

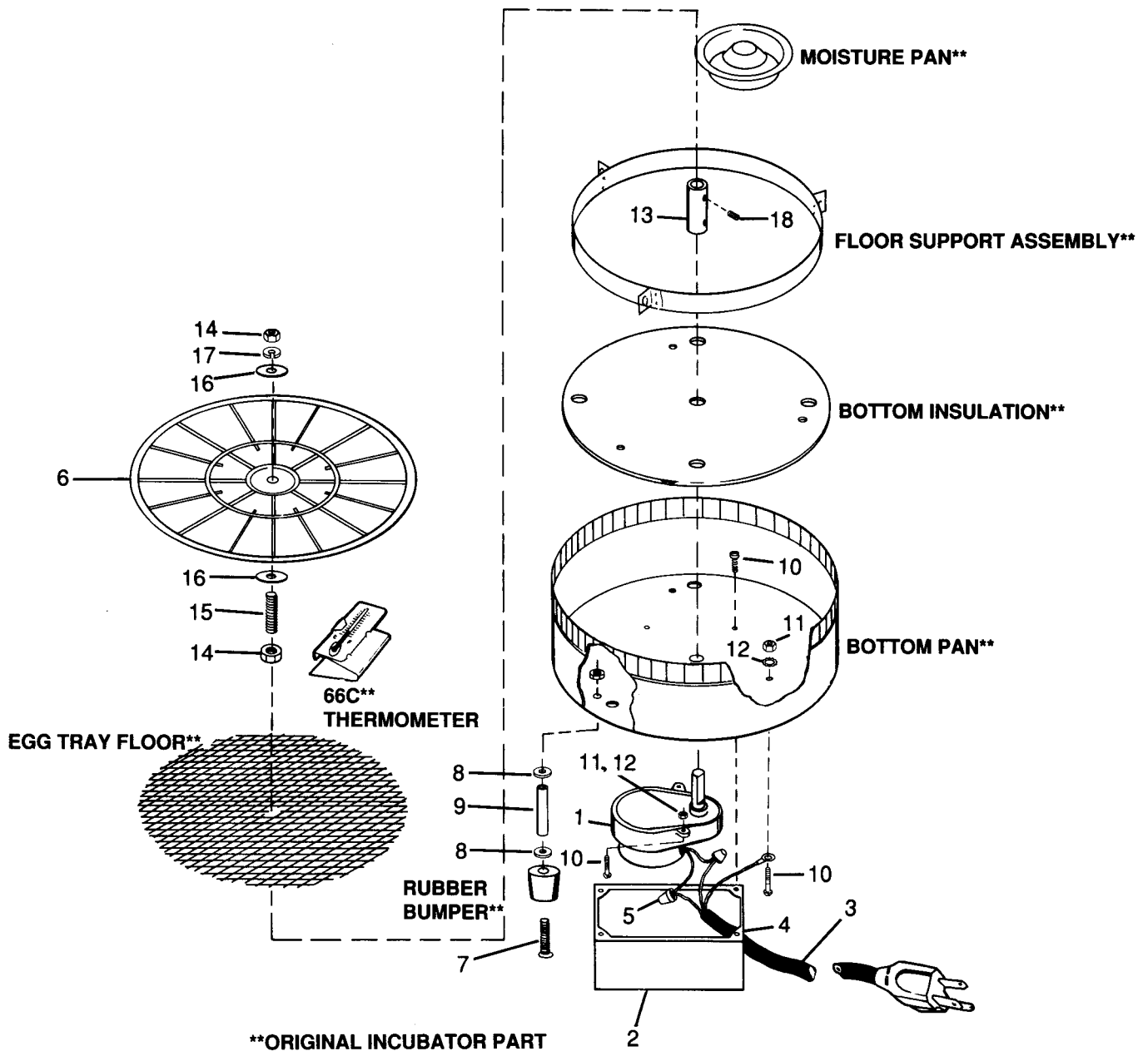


INCUBATOR SPECIFICATIONS

Model No.	Description	Egg Capacity (approximate)					Overall Size Inches (cm)	Shipping Weight	
		Chicken	Quail	Pheasant	Turkey	Goose		Lbs.	(kg)
846	100-Egg Incubator, 110V	100	160	130	80	40	21 Dia. x 8½ H (53.3 Dia. x 21.6 H)	25	(11.4)
846220	220-volt, 50 Hz Incubator						21 Dia. x 8½ H (53.3 Dia. x 21.6 H)	25	(11.4)

845AT AUTOMATIC TURNER KIT

Ref. No.	Part No.	Description	Quantity
1	45502	Model 100 Motor 1/450 RPM	1
2	17367	#220 Plastic Case (45040)	1
3	45072	18-3 SJT X 5'1/2' Cord Set	1
4	45017	SR-6P-34 Strain Relief Bushing	1
5	45047	#35653 Nylon Connector	2
6	71512	14 ³ / ₈ OD Turning Grid	1
7	OF20*	8-32 x 1 ³ / ₄ Slotted Round Head Machine Screw, Zinc	3
8	OF365*	¹³ / ₆₄ ID x ⁵ / ₈ OD x ¹ / ₃₂ Washer, Zinc #8	6
9	17365*	¹ / ₄ " OD x ⁷ / ₈ " Aluminum Spacer	3
10	OF363*	4-40 x ³ / ₈ Slotted Round Head Machine Screw, Zinc	7
11	OF364*	4-40 Hex Machine Screw Nut, Zinc	3
12	OF209*	#6 External Tooth Lock Washer, SS	3
13	70566*	¹ / ₄ " ID x ³ / ₄ " Shaft Coupling	1
14	OF55*	¹ / ₄ -20 Hex Nut, Zinc	2
15	17366*	¹ / ₄ -20 x 1 ¹ / ₈ " Threaded Extension	1
16	OF120	⁵ / ₁₆ " ID x ³ / ₄ " OD Washer, Zinc - ¹ / ₄ "	4
17	OF113*	¹ / ₄ " Split Lock Washer, Zinc	1
18	OF21*	8-32 x ¹ / ₄ " Socket Set Cup Point Screw	2
	17363	Hardware Bag, Includes items with *	1
	ISB845AT	Instruction Sheet	1



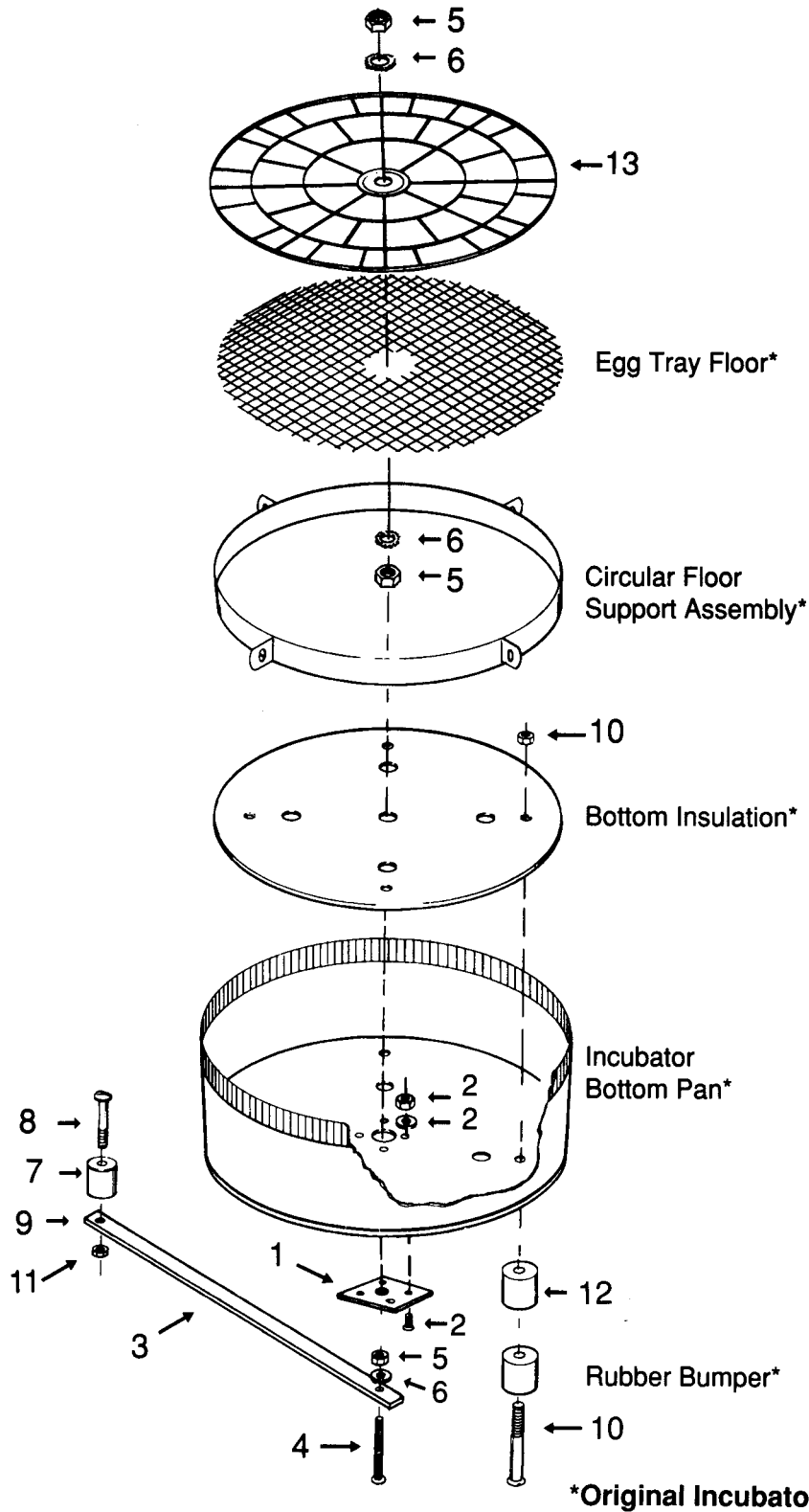
AUTOMATIC TURNER SPECIFICATIONS

Model No.	Description	Egg Capacity (approximate)					Overall Size Inches (cm)	Shipping Weight	
		Chicken	Quail	Pheasant	Turkey	Goose		Lbs.	(kg)
845AT	Automatic Turner Kit, Electric	24	40	32	No	No	16 W. x 18 L x 3 H* (40.6 W x 45.7 L x 7.6 H)	3	(1.4)

*Dimensions of carton

845MT AND 846MT MANUAL EGG TURNERS

Ref. No.	Part No.	Description	Quantity
1	17499*	Mounting Plate Assembly	1
2	OF261*	6-32 x 1/4" Slotted Round Head Machine Screw, Zinc	4
	OF52*	6-32 Hex Machine Screw Nut, Zinc	4
	OF209*	#6 External Tooth Lock Washer, SS	4
3-1	17494	Egg Turner Crank Handle for 845MT	1
3-2	17495	Egg Turner Crank Handle for 846MT	1
4	OF467*	1/4-20 x 3" Carriage Bolt, Zinc	1
5	OF55*	1/4-20 Hex Nut, Zinc	3
6	OF116*	1/4" External Tooth Lock Washer, SS	3
7	70253*	516R Recessed Bumper (Used for handle)	1
8	OF371*	8-32 x 1" Slotted Round Head Machine Screw	1
9	OF207*	#8 External Tooth Lock Washer	1
10	OF20*	8-32 x 1 3/4" Slotted Round Head Machine Screw, Zinc	4
11	OF294*	8-32 Hex Machine Screw Nut, Zinc	5
12	70253	516R Recessed Bumper (Used as spacers)	4
13-1	71512	Turning Grid for 845MT, 14 3/8 OD	1
13-2	71513	Turning Grid for 846MT, 20 3/8 OD	1
	52106	Hardware Bag, Includes items with *	1
	ISBMT	Instruction Sheet	1



MANUAL TURNER SPECIFICATIONS

Model No.	Description	Egg Capacity (approximate)					Overall Size Inches (cm)	Shipping Weight	
		Chicken	Quail	Pheasant	Turkey	Goose		Lbs.	(kg)
845MT	Manual Egg Turner	24	40	32	No	No	16 W x 18 L x 3 H* (40.6 W x 45.7 L x 7.6 H)*	3	(1.4)
846MT	Manual Egg Turner	52	80	65	No	No	22 W x 22 L x 3 H* (55.9 W x 55.9 L x 7.6 H)*	4	(1.8)

* Dimensions of carton.